

# Pegasus Quattro & Solo



## Pegasus State-of-the-Art Architecture

The Pegasus test system supports the enhanced speed and capacity requirements of the newest generation of storage devices. Designed with an open architecture, the Pegasus platform addresses the market's need for the ability to test multiple interfaces with minimal set-up time.

At the heart of the Pegasus system is an Intel Celeron-based single board computer (SBC) that supports UDMA, SCSI, FC-AL, ATAPI and SATA interfaces (plus more to come). This open architecture design runs Flexstar's Orion or Perseus test software, including customer-developed test cases written in Java or C.

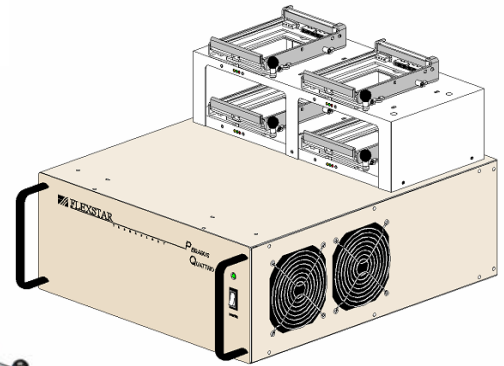
## Pegasus Quattro / Solo

The Pegasus Quattro and the Pegasus Solo are ambient test systems that include user-specified interfaces, power margining, and robust test software in a compact package. Ideal for applications such as firmware and test script development or debugging and drive repair, the Pegasus Quattro and Pegasus Solo offer many of the features of our chamber products. Using Ethernet connections, up to 25 units can be networked to a server (not included) running Orion or Perseus software.

## Features

- Quattro is a four port tester, Solo is a single port tester.
- Portable size and small footprint.
- Each port can be independently configured for a different interface in the Quattro.
- Ethernet connectivity to other Pegasus Quattro's and Solo's (up to 25 for Quattro).
- Supports any device interface through available host adapters.
- Exposed cable configuration facilitates use for shock and vibration testing.

*Pegasus Quattro*



*Pegasus Solo*

## Software

Flexstar's Perseus and Orion software both provide easy script driven testing of peripheral storage devices. Test scripts can be started, stopped, paused, resumed, etc. The software includes power margining control and powerful graphing features for real time analysis of parametric test data through the easy to use GUI.



*Pegasus Quattro*

*Pegasus Solo*

**Power**

Voltage and current	100 - 125 VAC @ 3.0 A 208 - 240 VAC @ 2.0 A	95 – 250 VAC @ 1.5 A
Frequency	50 - 60 Hz	50 - 60 Hz

**Mechanical**

Exterior	17.5" W x 22" D x 13.5" H (44.5 cm x 50.8 cm x 34.3 cm)	16.5" L x 8.5" W x 5.5" H* (41.9 cm. x 21.6 cm. x 14.0 cm.)*
Weight	51 lbs. (23 kg) with fixture carriage	15 lbs. (6.8 kg)
Drive capacity	4	1

\* 7.5" (19.1 cm) high w/ fixture on top

**Pegasus "NPM" Power Margining**

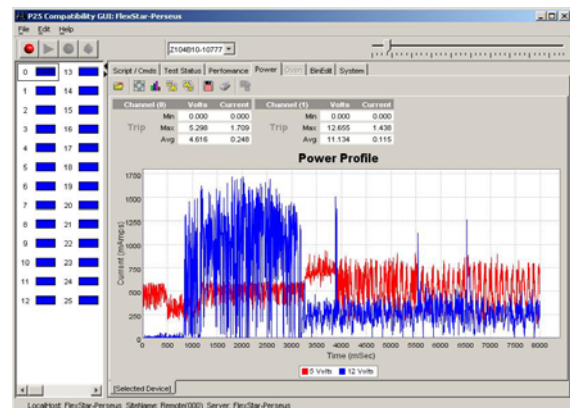
- Dual independent outputs
- 3.5 amps continuous power on both outputs
- Current profiling with programmable sample rate
- 2 mV voltage programming resolution
- +/- 1.5% voltage readback accuracy
- Current measurement accuracy +/- 1% of full scale

**Configuration Options:**

- HDD Anti-vibration fixtures (1- in. to 3 ½ - in.)
- Slim or Half-height CD drive fixtures

**FlexStar Technology**  
47323 Warm Springs Blvd.  
Fremont, CA 94539  
Phone: (510)440-0170  
Fax: (510)440-0177  
Email: sales@flexstar.com  
Website: www.flexstar.com

© 2005 FlexStar Technology  
Specifications subject to change without notice.  
DCN: QuattroSolo110105



Powerful and User-friendly Perseus test software

**Interface Options:**

- UDMA66, UDMA100 & UDMA133
- SCSI 4 Ultra 320
- FC-AL 2 Gbps
- ATAPI
- Serial ATA 2.0
- USB 2.0
- SAS